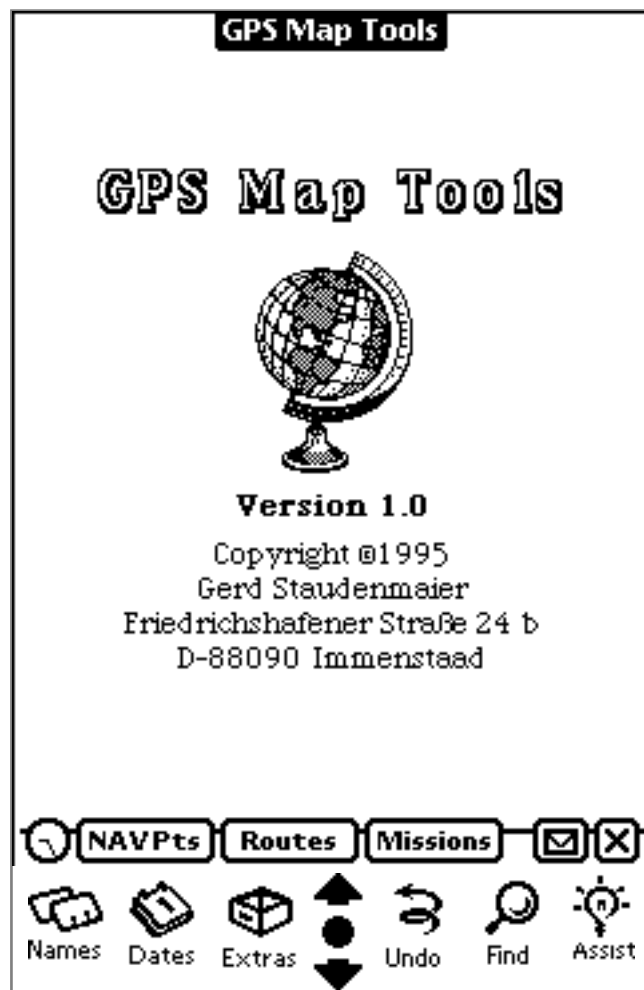


GPS Map Tools

User Manual



Copyright ©1994-96 Gerd Staudenmaier
Software Development & Marketing
Friedrichshafener Strasse 24 b
D-88090 Immenstaad, Germany

All rights reserved.

This manual and the described software products *GPS Map*, *GPS Map Tools*, *GPS Sim* and *NewTerm* contain copyrighted material, trade secrets and other proprietary material.

Reproduction, adaptation, or translation of this document and the associated software as complete or extracts are prohibited without prior written permission of the author. You may not decompile, reverse engineer, disassemble or otherwise reduce the Software to a human-perceivable form. You may not modify, network, rent, lease, loan, distribute or create derivative works based upon the Software in whole or in part. You may not electronically transmit the Software from one device to another or over a network. You may make backup copies of the software for your own usage only.

The author assumes no responsibility for the correctness of this manual and the described software.

The author assumes no responsibility for any damage caused by use of his navigation software and this document.

Informations presented in this manual may be changed for progression without pre-announcement.

GPS Map[™], *GPS Map Tools*[™], *GPS Sim*[™] and *NewTerm*[™] are trademarks of the author. *Newton*, *MessagePad*, *Newton Connection Kit*, *Macintosh* and *Apple* are trademarks of *Apple Computer, inc.* *Windows* is a trademark of *Microsoft corp.* Other mentions and product names may be trademarks of other companies and are explicitly agreed. These names are mentioned for informational purposes only.

April 1996

Contents

Introduction.....	3
Installation.....	4
“NAV Pts” Menu	5
“Routes” Menu.....	8
“Missions” Menu	10

Introduction

GPS Map Tools is a tools application for use in coherence with *GPS Map*.

By using *GPS Map Tools* you are able to maintain your data defined within *GPS Map* or to exchange them with other users of *GPS Map* .

In summary these are the actions which may be done by using *GPS Map Tools*:

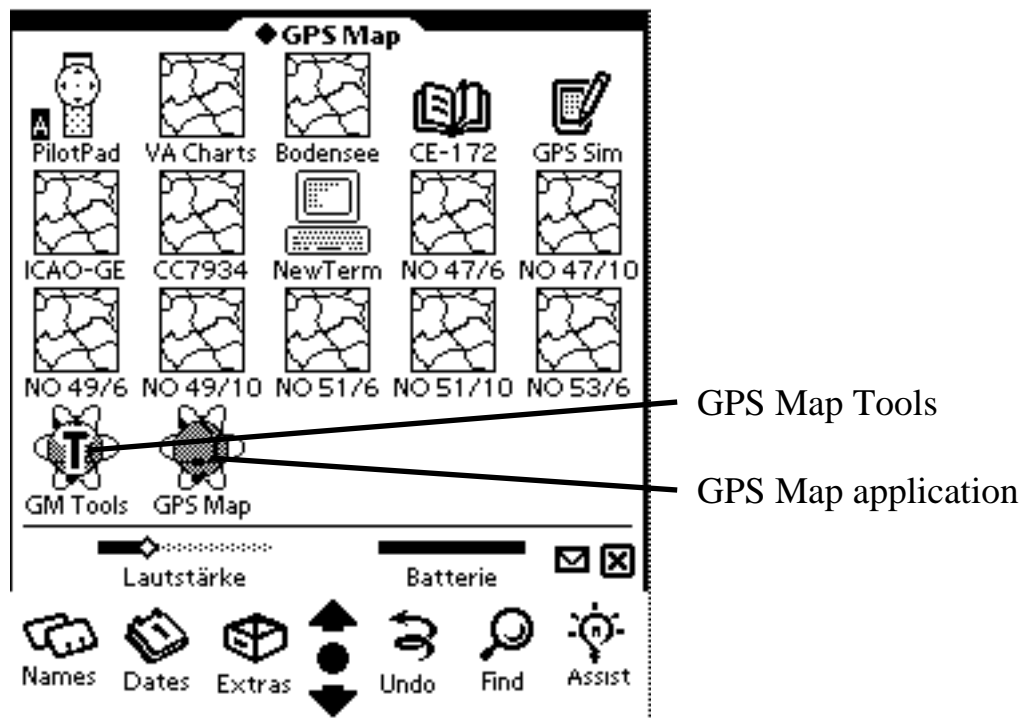
- Beaming (transmitting per infrared) single NAV points or complete routes to other Newton™ compatible PDAs (the receiving PDA must have installed *GPS Map Tools*, too)
- Printing single NAV points or complete routes to any printer supported by your PDA
- Faxing or e-mailing single NAV points or complete routes
- Renaming NAV points, routes and recorded missions
- Deleting NAV points, routes and recorded missions
- Moving NAV points or complete routes between internal PDA memory and PCMCIA memory card

If you don't need any of the functions above it is not necessary to read more of this manual and you may abstain from installing *GPS Map Tools*.

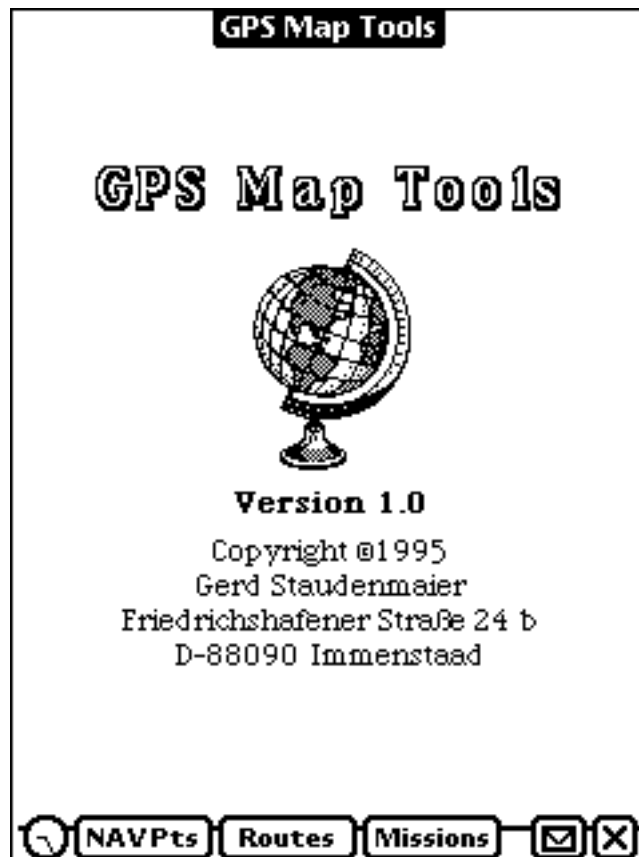
Installation

- Decide where to store the application and check the storage settings within the built in application “Card”.
- Download *GPS Map Tools* by using the installer or the “*Newton Connection Kit*”.

Now tap onto your PDA’s *Extras* symbol. Dependant of the map containers installed you should see your *Extras* folder similar as on the following picture (the shareware tool *ScrollEx* has hidden all other applications).

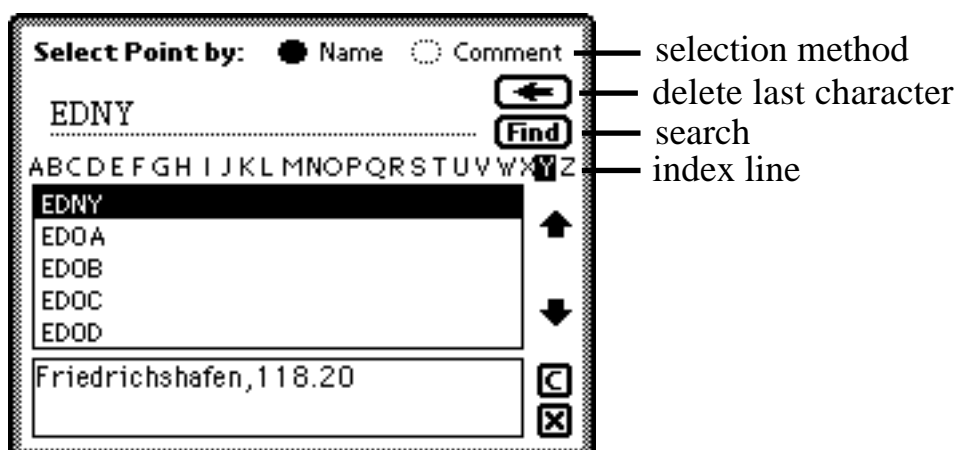


Start *GPS Map Tools* by tapping onto its symbol.

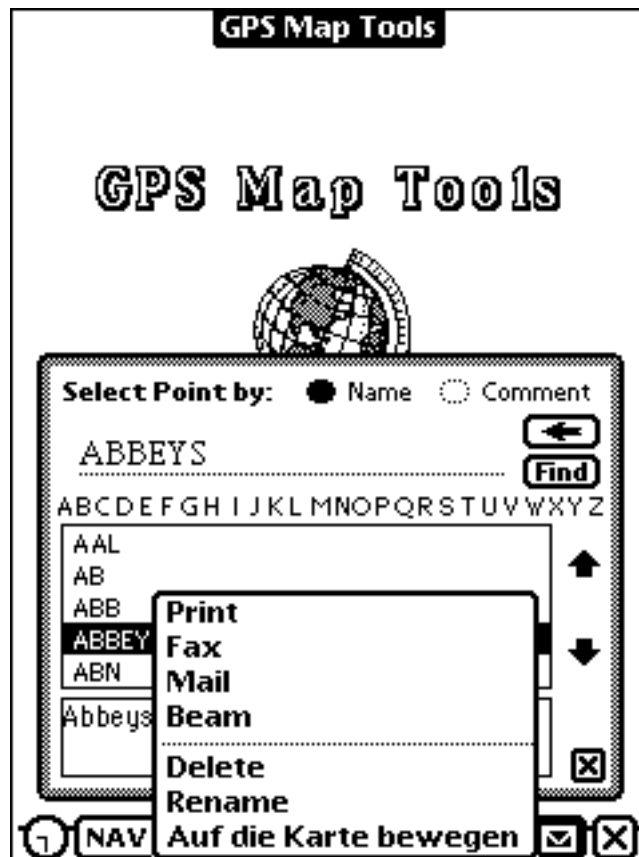


“NAV Pts” Menu

By tapping onto the **NAVpts** key you will get the same database query window as already familiar from within *GPS Map* .



After selecting a NAV point as described within the *GPS Map* manual the action button will be active.



Print, Fax, Mail, Beam

The methods of approach for beaming, printing, faxing and e-mailing are identical to those described within your PDAs operation manual. If you are not familiar with it please take a look to the corresponding chapters.

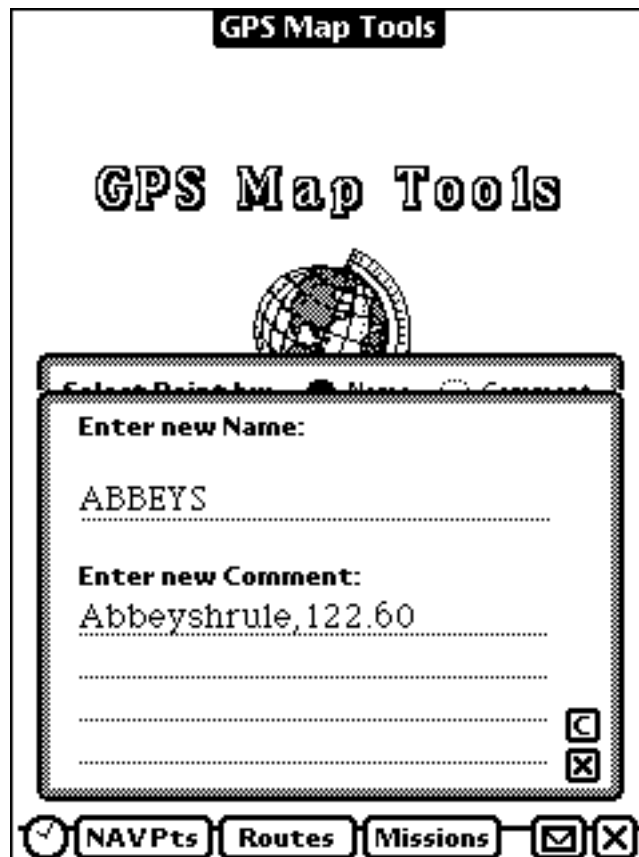
Delete

For deleting a NAV point tap onto the “Delete” item.

This function may be cancelled by tapping onto the PDAs standard “Undo” button at the bottom of the screen!

Rename

For renaming a NAV point or changing its comment tap onto the “Rename” item.



Edit the name and/or comment with the same rules as apply to defining a new NAV point within *GPS Map*.

Note: This function can not be cancelled!

Move to / from card

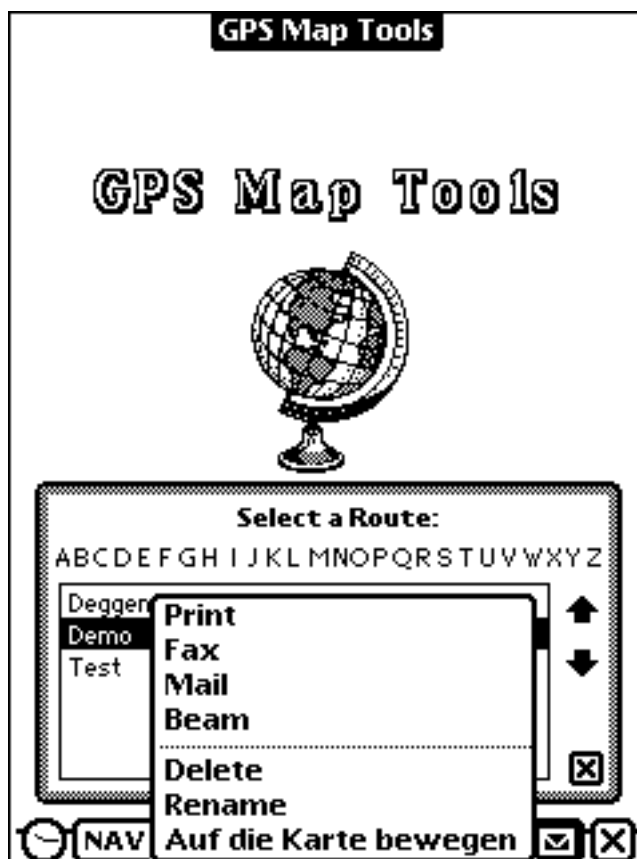
This menu item has been generated by the operating system and is therefore displayed in the preferred language of your PDA.

Dependent of where the selected NAV point is currently stored (internal or card) the item text will change accordingly.

Use this command for moving NAV points from internal PDA memory to the card or vice versa.

“Routes” Menu

By tapping onto the **Routes** key you will get the same route selection window as already familiar from within *GPS Map* .



After selecting a route like described within the *GPS Map* manual the action button will be activated.

Print, Fax, Mail, Beam

The methods of approach for beaming, printing, faxing and e-mailing are identical to those described within your PDAs operation manual. If you are not familiar with it please take a look to the corresponding chapters.

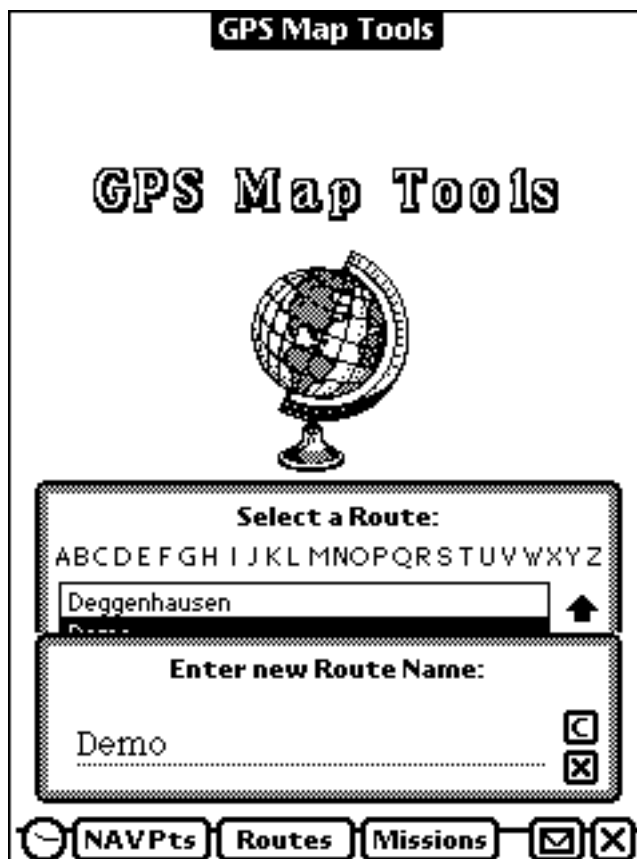
Delete

For deleting a route tap onto the “Delete” item.

This function may be cancelled by tapping onto the PDAs standard “Undo” button at the bottom of the screen!

Rename

For renaming a route tap onto the “Rename” item.



Edit the name with the same rules as apply to defining a new route within *GPS Map*.

Note: This function can not be cancelled!

Move to/from card

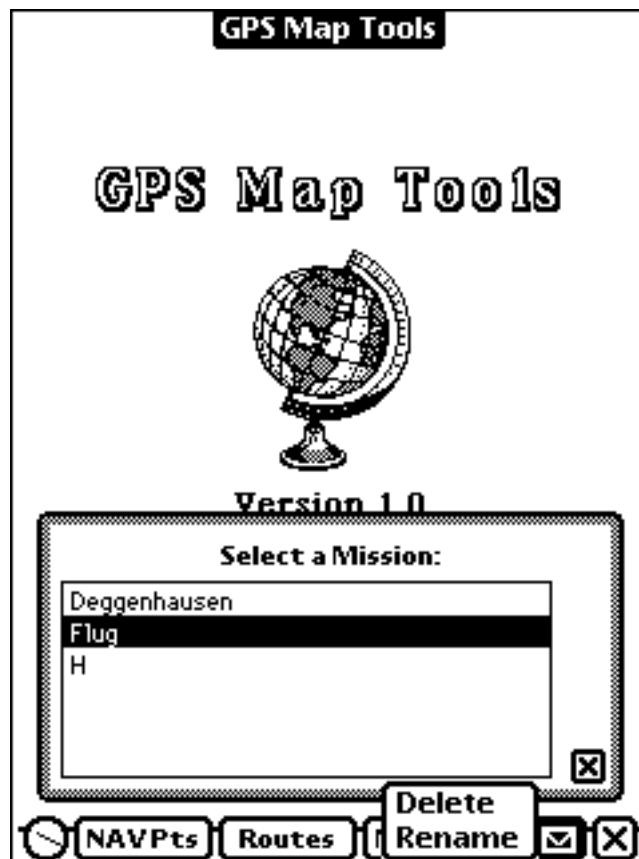
This menu item has been generated by the operating system and is therefore displayed in the preferred language of your PDA.

Dependent of where the selected route is currently stored (internal or card) the item text will change accordingly.

Use this command for moving routes from internal PDA memory to the card or vice versa.

“Missions” Menu

By tapping onto the **Missions** key you will get the same mission selection window as already familiar from within *GPS Map*.



Functions like printing, faxing or e-mailing don't make sense for missions. Because of the limited RAM memory of current PDAs beaming missions is not possible at the moment. Copying missions from internal memory to the card or vice versa would be very slow. and therefore is currently not implemented, too.

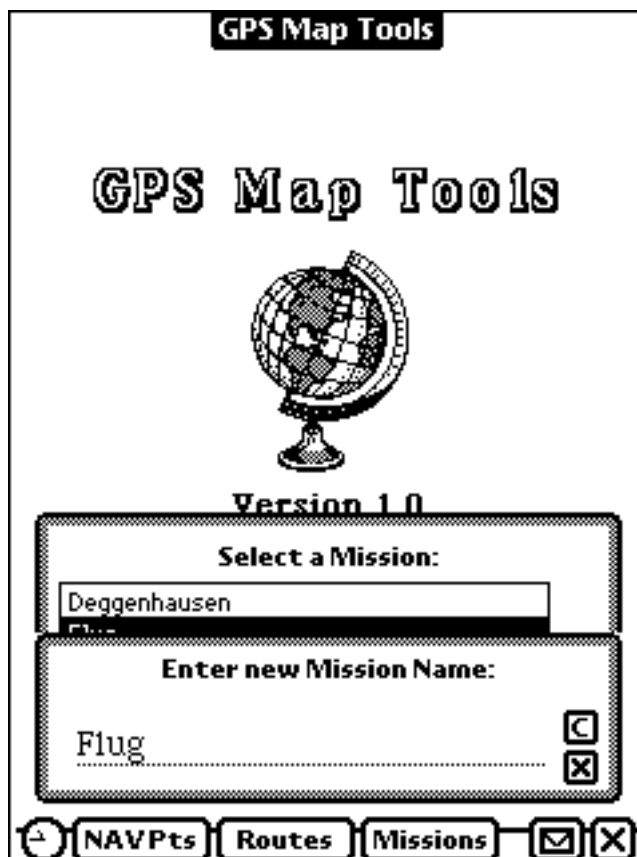
Delete

For deleting a mission tap onto the “Delete” item.

Note: This function can not be cancelled!

Rename

For renaming a mission tap onto the “Rename” item.



Edit the name with the same rules as apply to defining a new mission within *GPS Map*.

Note: This function can not be cancelled!